



CRTV | SCTY

Collectively
Created

Individually
Expressed

Reg. No.
3-528-874

EST. 2007



SPRING
2022



BE
HERE
NOW



BE HERE NOW

“Early in the journey you wonder how long the journey will take and whether you will make it in this lifetime. Later you will see that where you are going is HERE and you will arrive NOW... ”

It’s always been about the journey. The friends you make along the way, the experiences you share, and the memories you create.

Spring 2022 finds us excepting the energy that surrounds us from that journey and channeling it into toxic positivity.

The CREATIVE SOCIETY

is a community that influences generations by sharing the expressive talents of athletes artists, musicians, designers and photographers.

We strive to broaden the view of fashion by integrating the personality of our creative culture, endlessly pursuing what we believe.





LC7801 CONROE NYLON JOGGER

BLACK / OLIVE

S - XXL | 100% NYLON
 USA: w/s \$28 msrp \$56

CAN: w/s \$32.50 msrp \$65



LC8001 APEX PIGMENT DYE FLEECE CARGO JOGGER

BLACK / STONE

S - XXL | 70% COTTON / 30% POLY
 USA: w/s \$25 msrp \$50

CAN: w/s \$32.50 msrp \$65



LC8002 ROBESON TIE DYE FLEECE JOGGER
KHAHI / LILAC

S - XXL | 70% COTTON / 30% POLY
USA: w/s \$25 msrp \$30 CAN: w/s \$30 msrp \$60



LC8003 CARBORO RELAXED FIT CHINO
BLACK / KHAHI / BLUE

S - XXL | 98% COTTON / 2% ELASTANE
USA: w/s \$30 msrp \$60 CAN: w/s \$37.50 msrp \$75



LC6755 VINTAGE DENIM JOGGER 2.0

DARK BLACK / BLACK / DARK BLUE / BLUE / BLACK ACID / BLUE ACID

28 - 38 | 98% COTTON / 2% ELASTANE

USA: w/s \$30 msrp \$60

CAN: w/s \$35 msrp \$70



LC7444 ROTHSAY NYLON CARGO

BLACK / EMERALD / SILVER / CHARCOAL / KHAKI

S - XXL | 100% NYLON

USA: w/s \$22.50 msrp \$45

CAN: w/s \$27.50 msrp \$55



LC7450 COMRADE 2.0 CHINO

BLACK / BURGUNDY / SILVER / KHAKI

S - XXL | 98% COTTON / 2% ELASTANE

USA: w/s \$30 msrp \$60

CAN: w/s \$37.50 msrp \$75



LC6730 JUCKSON CARGO

BLACK / CHARCOAL / KHAKI / BLUE DENIM

S - XXL | 98% COTTON / 2% ELASTANE

USA: w/s \$26 msrp \$52

CAN: w/s \$32.50 msrp \$65





LC7445 NEWPORT SLIM FIT DENIM

DARK BLACK / BLACK / DARK BLUE / BLUE / LIGHT BLUE

28 - 38 | 14" OPENING | 98% COTTON / 2% ELASTANE
USA: w/s \$29 msrp \$58 CAN: w/s \$35 msrp \$70



LC7447 HUNTINGTON SLIM FIT / DISTRESSED DENIM

DARK BLACK / BLUE / LIGHT BLUE

28 - 38 | 14" OPENING | 98% COTTON / 2% ELASTANE
USA: w/s \$29 msrp \$58 CAN: w/s \$35 msrp \$70



LC7448 SAN CLEMENTE SLIM FIT / ELASTIC WAIST DENIM

DARK BLACK / BLACK / DARK BLUE / BLUE / MEDIUM BLUE

28 - 38 | 98% COTTON / 2% ELASTANE
USA: w/s \$29 msrp \$58 CAN: w/s \$35 msrp \$70

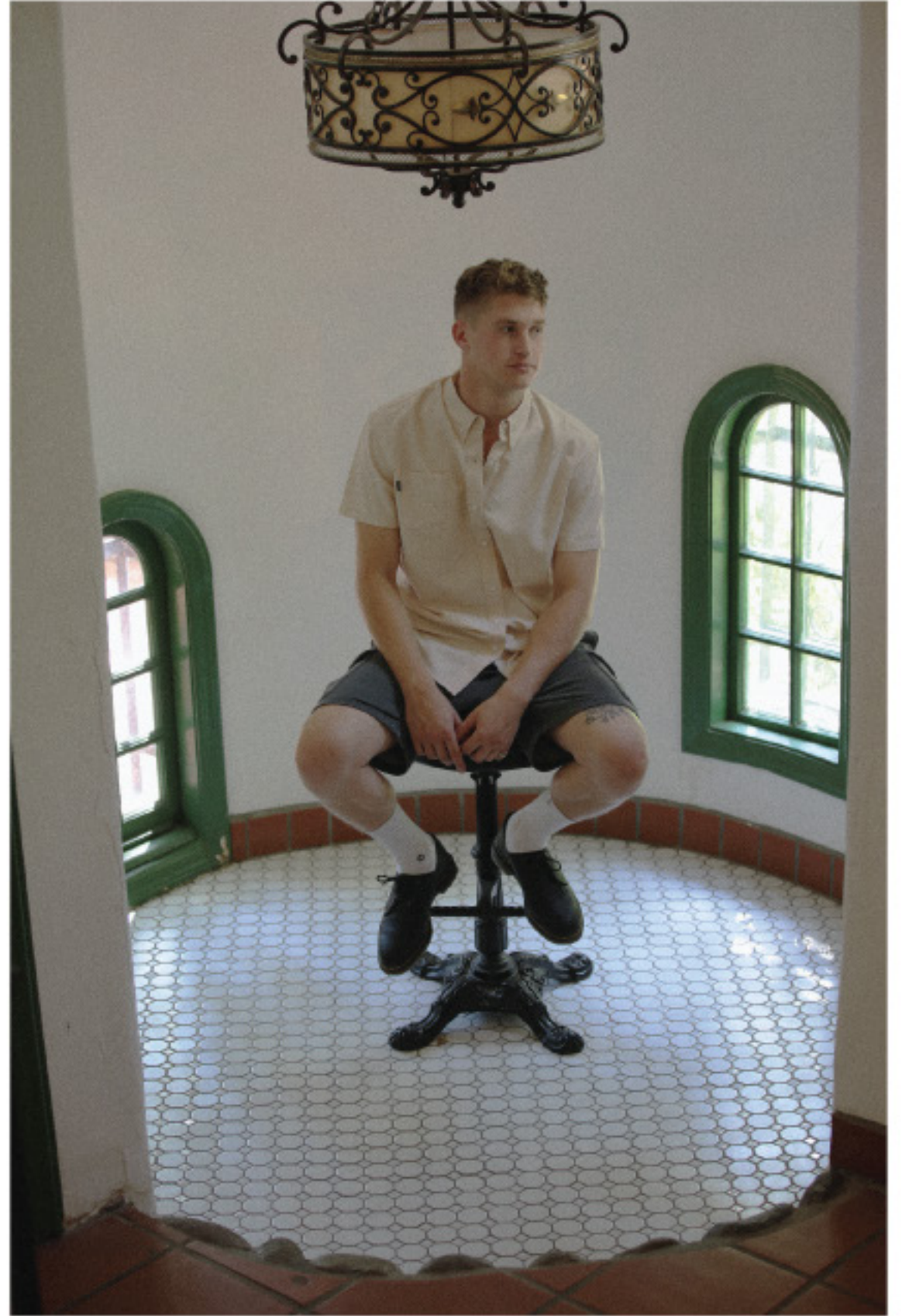


LC7446 LAGUNA STRAIGHT FIT DENIM

DARK BLACK / BLACK / DARK BLUE / BLUE / MEDIUM BLUE

28 - 38 | 16" OPENING | 98% COTTON / 2% ELASTANE
USA: w/s \$29 msrp \$58 CAN: w/s \$35 msrp \$70







LC8010 GASTON NYLON FIELD SHORT

LILAC / OLIVE

S - XXL | 18" OUTSEAM | 100% NYLON

USA: w/s \$20 msrp \$40 CAN: w/s \$27.50 msrp \$55



LC8012 IRDELL NYLON SHORT

PEACH

S - XXL | 18" OUTSEAM | 100% NYLON

USA: w/s \$20 msrp \$40 CAN: w/s \$27.50 msrp \$55



LC8011 WAKE PIGMENT DYE FLEECE CARGO SHORT

BLACK / STONE

S - XXL | 18" OUTSEAM | 70% COTTON / 30% POLY

USA: w/s \$23 msrp \$46 CAN: w/s \$30 msrp \$60



LC8013 CRAVEN TIE DYE MESH SHORT

KHAKI / LILAC

S - XXL | 19" OUTSEAM | 100% POLY

USA: w/s \$23 msrp \$46 CAN: w/s \$30 msrp \$60



LC8014 ALAMANCE PLAID NYLON SHORT
TURQUOISE

S - XXL | 18" OUTSEAM | 100% NYLON
USA: w/s \$20 msrp \$40 CAN: w/s \$27.50 msrp \$55



LC8016 KINSTON NYLON SHORT
TURQUOISE

S - XXL | 18" OUTSEAM | 100% NYLON
USA: w/s \$20 msrp \$40 CAN: w/s \$27.50 msrp \$55



LC8015 CHROZ PIGMENT DYE FLEECE SHORT
BLACK / STONE

S - XXL | 18" OUTSEAM | 70% COTTON / 30% POLY
USA: w/s \$23 msrp \$46 CAN: w/s \$30 msrp \$60



LC8017 BOONE TIE DYE FLEECE SHORT
KHAKE / LILAC

S - XXL | 18" OUTSEAM | 70% COTTON / 30% POLY
USA: w/s \$23 msrp \$46 CAN: w/s \$30 msrp \$60



LC7312 UNION NYLON CARGO SHORT

EMERALD / STONE / SAGE / LILAC / BURGUNDY / BLACK / CHARCOAL / SLATE / KHAKI

S - XXL | 100% NYLON
USA: w/s \$20 msrp \$40

CAN: w/s \$25 msrp \$50



LC6842 ANTIQUE DENIM JOGGER 2.0

DARK BLACK / BLACK / DARK BLUE / BLUE / BLACK ACID / BLUE ACID

28 - 38 | 18" OUTSEAM | 98% COTTON / 2% ELASTANE

USA: w/s \$24 msrp \$48

CAN: w/s \$27.50 msrp \$55



LC7613 TITAN DENIM CARGO SHORT

BLACK / CHARCOAL / KHAKI / MEDIUM BLUE

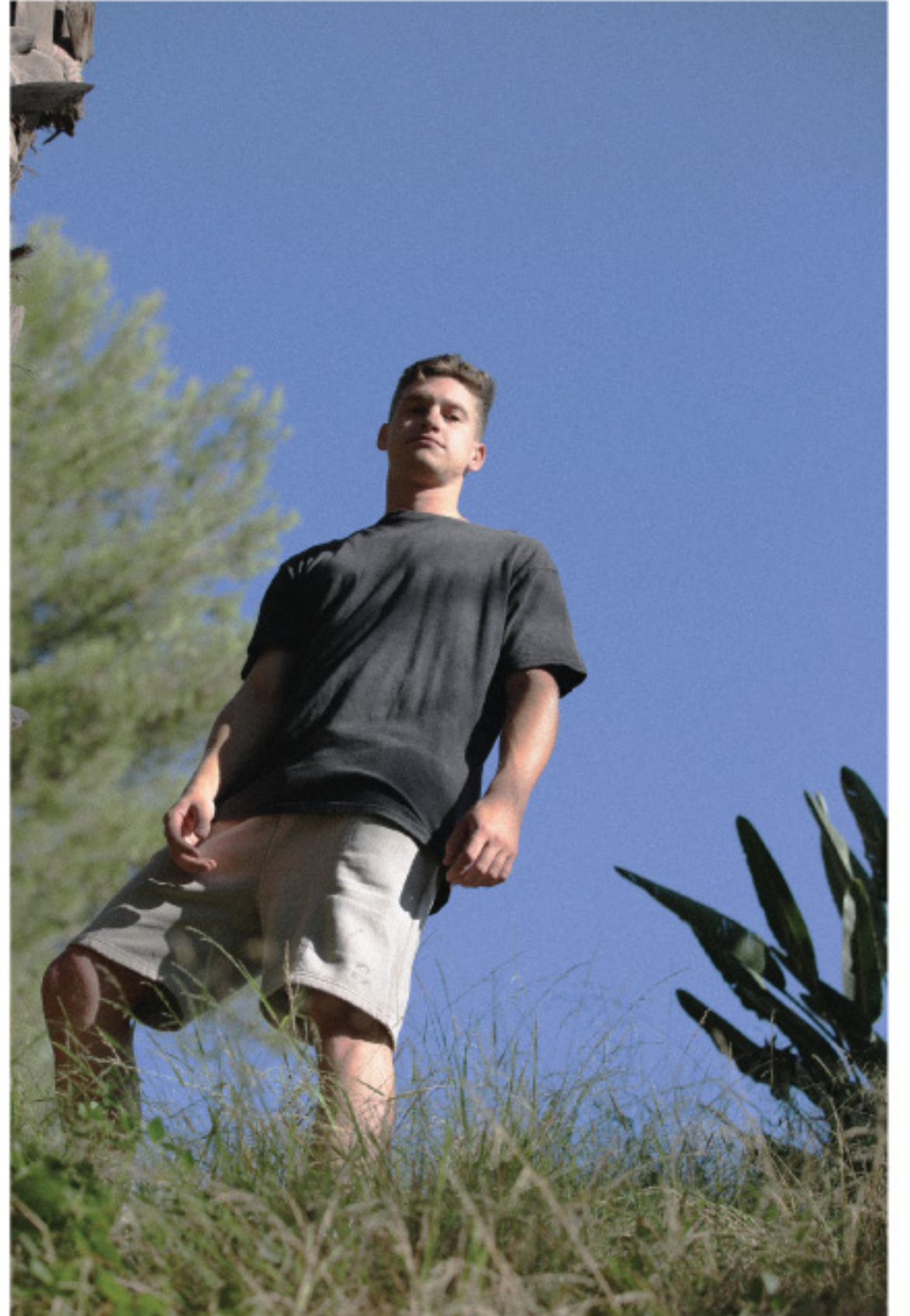
S - XXL | 98% COTTON / 2% ELASTANE

USA: w/s \$22.50 msrp \$45

CAN: w/s \$30 msrp \$60









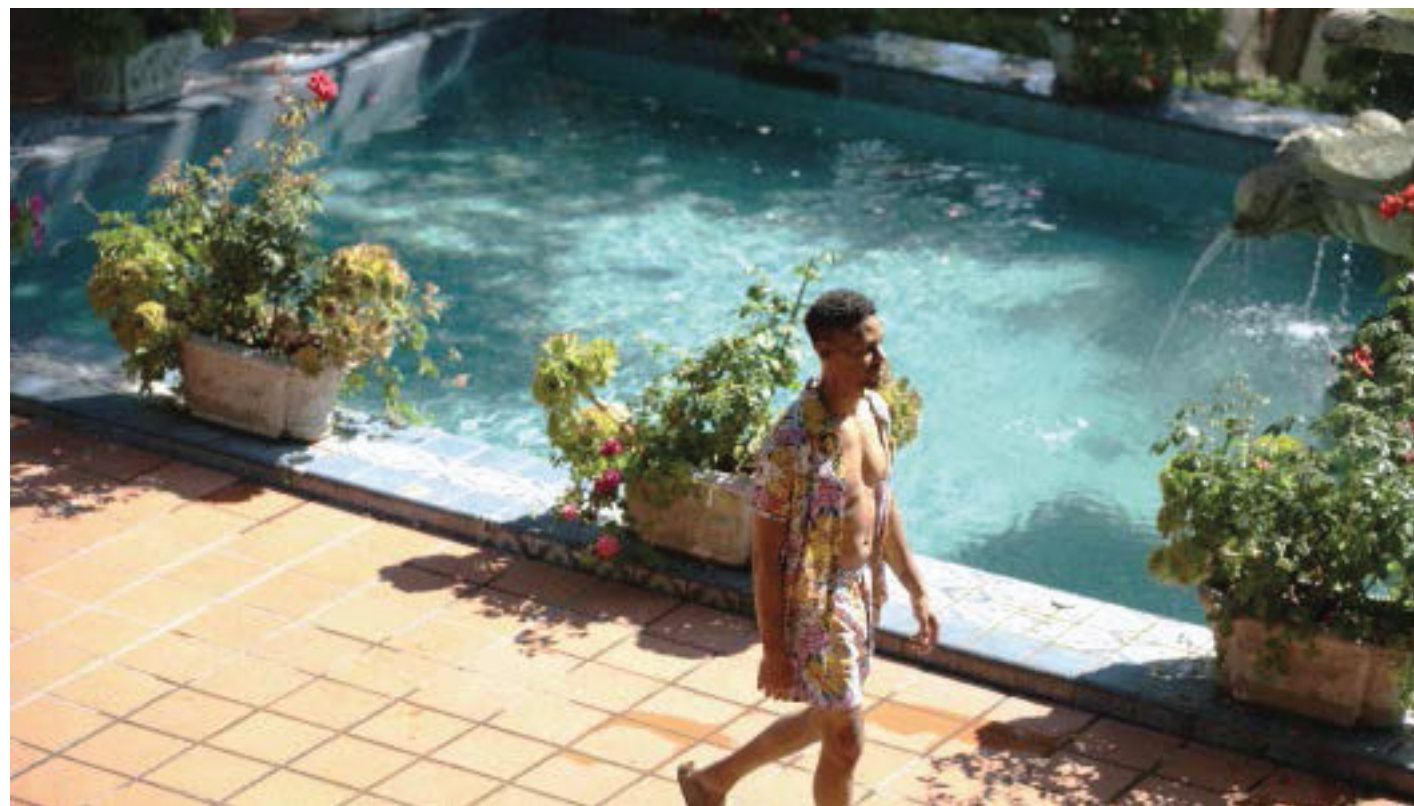
LC7812 HOLLIS NYLON ANORAK

BLACK / OLIVE / TURQUOISE

S - XXL | 100% NYLON

USA: w/s \$35 msrp \$70

CAN: w/s \$42.50 msrp \$85



LC8030 KORMAN SHORT SLEEVE WOVEN

CHARCOAL / OLIVE

S - XXL | 100% VISCOSE

USA: w/s \$25 msrp \$50

CAN: w/s \$32.50 msrp \$65



LC8040 HAVELOCK TIE DYE HOODED FLEECE

KHAKI / LILAC

S - XXL | 70% COTTON / 30% POLY

USA: w/s \$35 msrp \$70

CAN: w/s \$42.50 msrp \$85



LC8031 GUILFORD SHORT SLEEVE WOVEN

PEACH

S - XXL | 100% VISCOSE

USA: w/s \$25 msrp \$50

CAN: w/s \$32.50 msrp \$65



LC8041 CLAYTON SHORT SLEEVE TIE DYE KNIT

KHAKI / LILAC

S - XXL | 100% COTTON

USA: w/s \$16 msrp \$32

CAN: w/s \$20 msrp \$40



LC8042 ONSLOW TIE DYE MESH JERSEY

KHAKI / LILAC

S - XXL | 100% POLY

USA: w/s \$23 msrp \$46

CAN: w/s \$30 msrp \$60





LC8050 GARNER HOODED FLEECE

BLACK / SANDSHELL

S - XXL | 80% COTTON / 20% POLY

USA: w/s \$28 msrp \$56

CAN: w/s \$32.50 msrp \$65



LC8051 BURKE HOODED FLEECE

BLACK / WHITE

S - XXL | 80% COTTON / 20% POLY

USA: w/s \$28 msrp \$56

CAN: w/s \$32.50 msrp \$65



LC8052 VERINA HOODED FLEECE

BLACK / SANDSHELL

S - XXL | 80% COTTON / 20% POLY

USA: w/s \$28 msrp \$56

CAN: w/s \$32.50 msrp \$65





LC8053 RANDOLPH CREW NECK FLEECE

BLACK / WHITE

S - XXL | 80% COTTON / 20% POLY

USA: w/s \$25 msrp \$50

CAN: w/s \$32.50 msrp \$65



LC8054 CLEMMONS CREW NECK FLEECE

BLACK / HEATHER

S - XXL | 80% COTTON / 20% POLY

USA: w/s \$25 msrp \$50

CAN: w/s \$32.50 msrp \$65



LC8070 STOSS SHORT SLEEVE TEE

BLACK / WHITE

S - XXL | 100% COTTON

USA: w/s \$13 msrp \$26

CAN: w/s \$15 msrp \$30



LC8071 DOVANE SHORT SLEEVE TEE

BLACK / WHITE

S - XXL | 100% COTTON

USA: w/s \$13 msrp \$26

CAN: w/s \$15 msrp \$30



LC8072 HICKORY SHORT SLEEVE TEE

BLACK / WHITE

S - XXL | 100% COTTON

USA: w/s \$13 msrp \$26

CAN: w/s \$15 msrp \$30





LC8073 CABARRUS SHORT SLEEVE TEE

BLACK / WHITE

S - XXL | 100% COTTON

USA: w/s \$13 msrp \$26

CAN: w/s \$15 msrp \$30



LC8074 ROWAN SHORT SLEEVE TEE

BLACK / WHITE

S - XXL | 100% COTTON

USA: w/s \$13 msrp \$26

CAN: w/s \$15 msrp \$30



LC8075 ORANGE SHORT SLEEVE TEE

BLACK / WHITE

S - XXL | 100% COTTON

USA: w/s \$13 msrp \$26

CAN: w/s \$15 msrp \$30



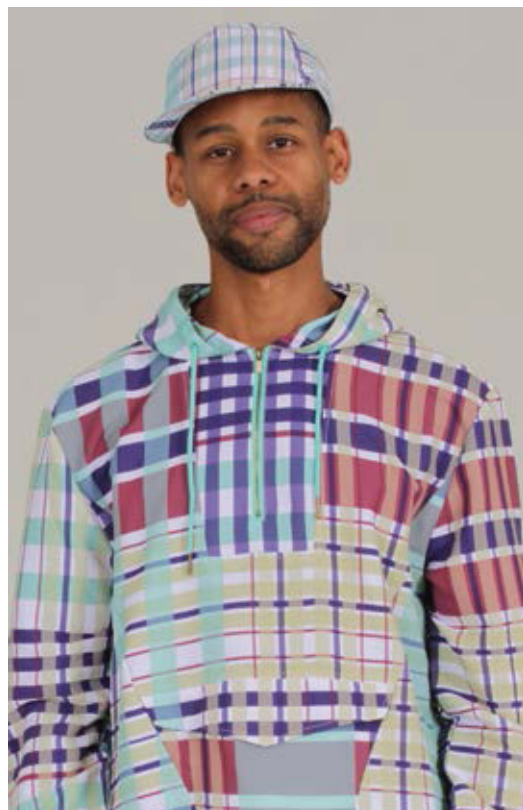
LC8090 LAWSEN DECONSTRUCTED TWILL TIE DYE SNAPBACK

KHAKI / LILAC

S - XXL | 100% COTTON

USA: w/s \$15 msrp \$30

CAN: w/s \$17.50 msrp \$35



LC8091 KWA DECONSTRUCTED NYLON PLAID SNAPBACK

TURQUOISE

S - XXL | 100% POLY

USA: w/s \$15 msrp \$30

CAN: w/s \$17.50 msrp \$35

SALES CONTACTS

LIRA CLOTHING

3421 VIA OPORTO #201

NEWPORT BEACH, CA 92663

SEAN HARRIS

NATIONAL SALES MGR

C. 949.929.8270

sean@liraclothing.com

LIRA CANADA INC.

1443 RUE BEGIN,

SAINT-LAURENT QC H4R 1V8

0. 877-507-5472 (LIRA)

MARC-A. SAUCIER

CANADIAN SALES MGR

C. 877.507.5472

marc@liraclothing.com

JON H. GENIER

QUEBEC & MARITIME

C. 450.542.0396

jonh@agencejg.com

J.S. WEIR

WESTERN CANADA

C. 778.320.9347

js@waydangerous.com

COLLECTIVELY CREATED. INDIVIDUALLY EXPRESSED. USA // REGISTRATION REG. NO. 3-528-874. LIRA MFG CO.

www.liraclothing.com